



CHOITHRAM COLLEGE OF NURSING

Accredited by NAAC, Affiliated to INC, MPNRC Bhopal, MPMSU Jabalpur
Choithram Hospital & Research Centre Manik Bagh Road, Indore-452014(M.P.)

Email: cconursing@yahoo.co.in, choithramoffice@gmail.com

Website: www.choithramnursing.com



ENVIRONMENTAL SUSTAINABILITY AND CONCIIOUSNESS

Environmental Energy Conservation

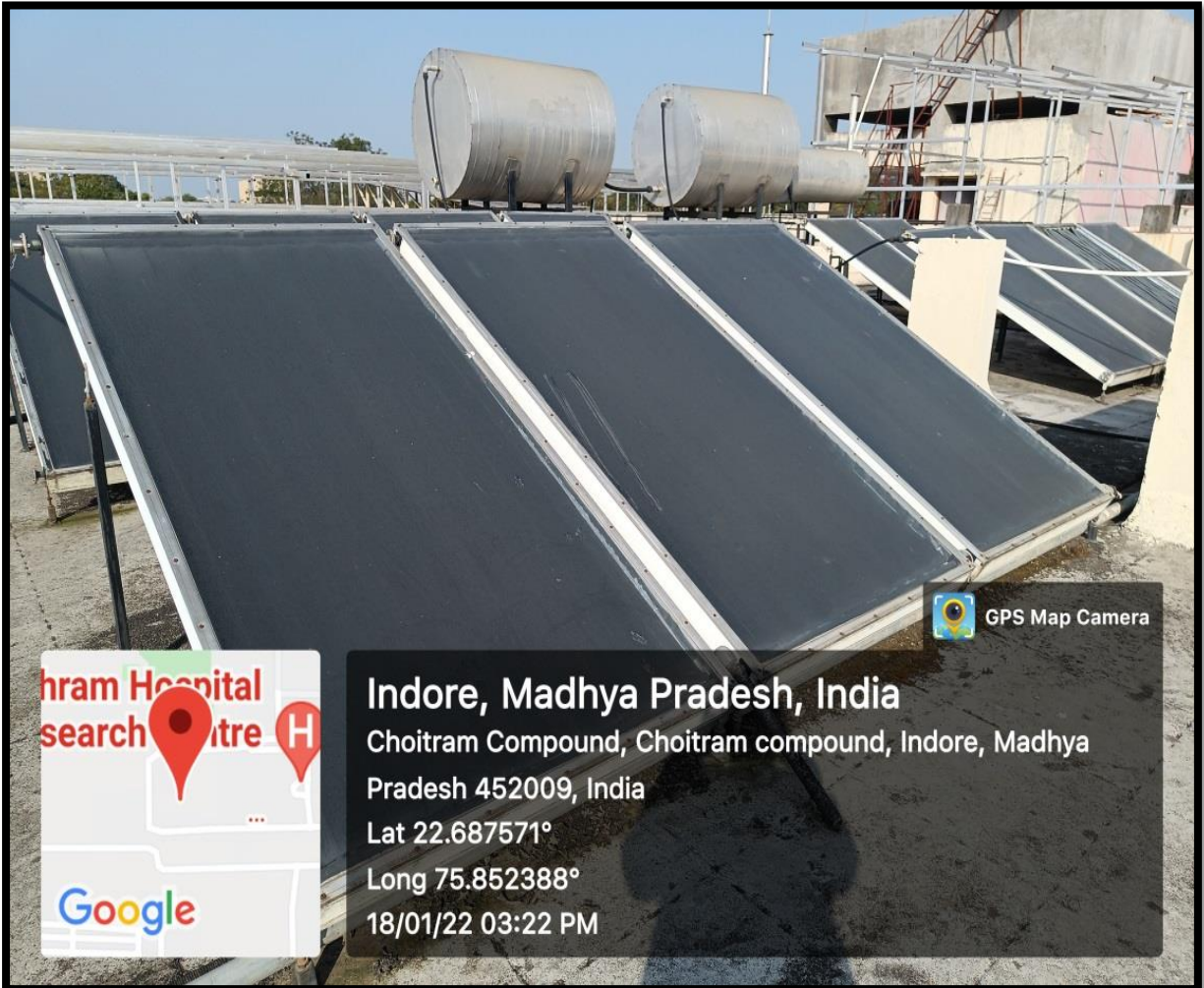
The Institution has facilities for alternate sources of energy and energy conservation measure.


1. USE OF SOLAR ENERGY

33-KV Three phase solar panel installed in the institute campus

Choithram Management has installed Total 95 KWp on grid Rooftop Solar Power Plants to harness the solar since 2016. Solar panels are mounted on the rooftop of the hostel also, for warm water circulation for students use.



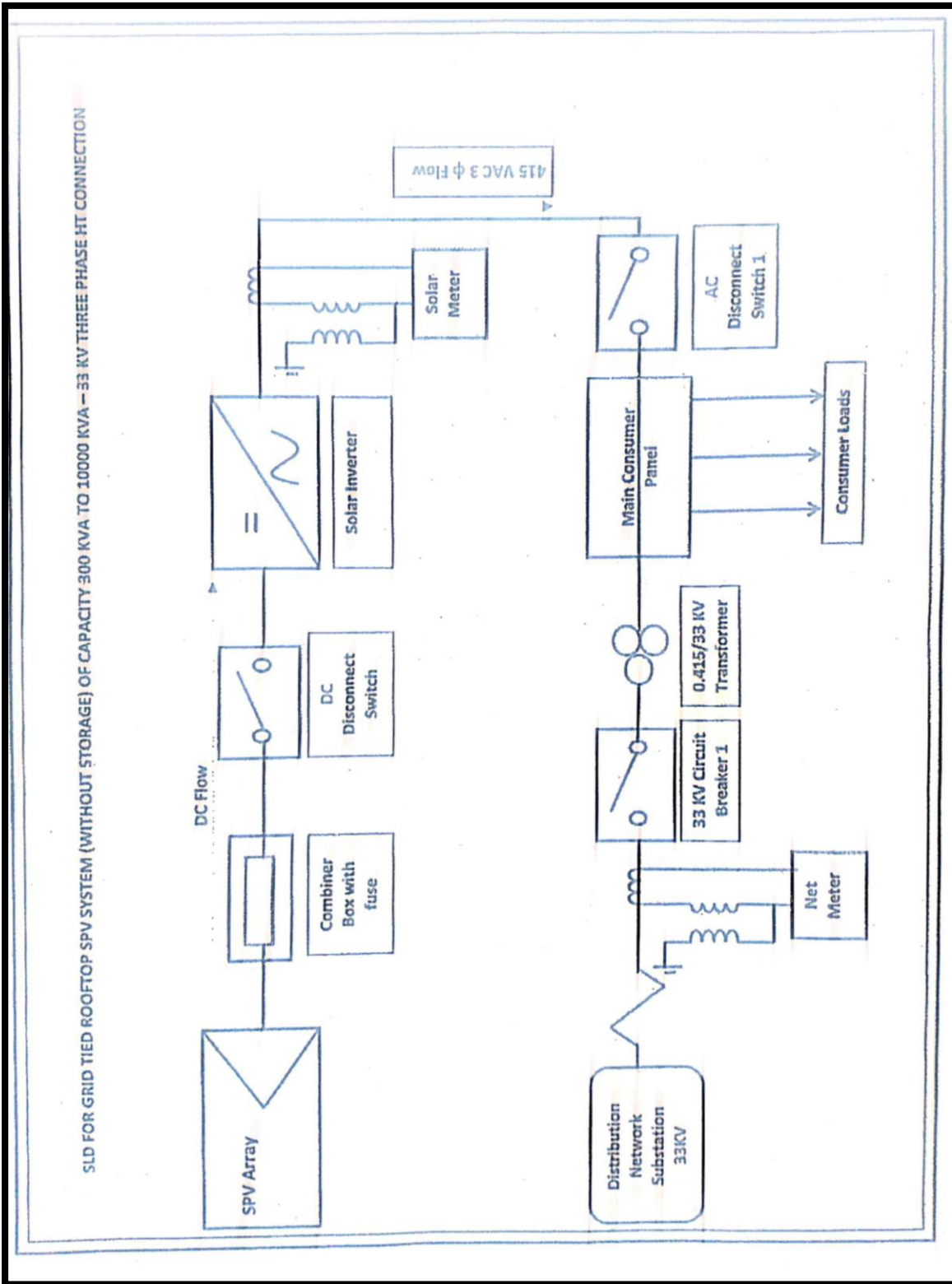


 GPS Map Camera

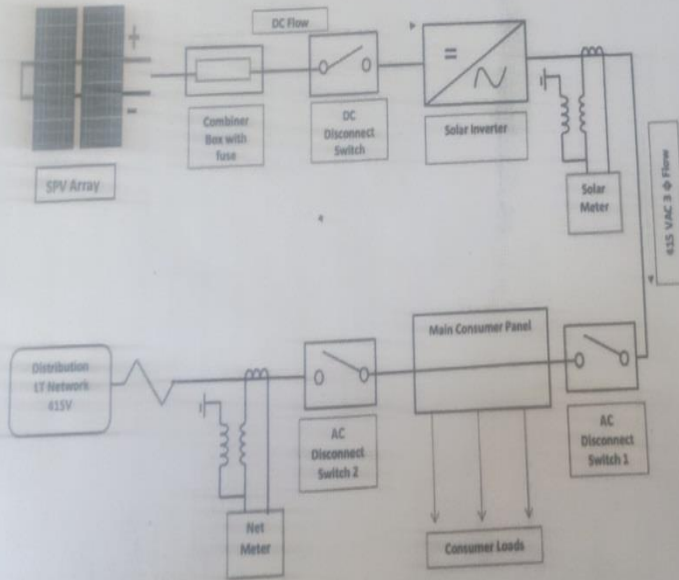


Indore, Madhya Pradesh, India
Choitram Compound, Choitram compound, Indore, Madhya Pradesh 452009, India
Lat 22.687571°
Long 75.852388°
18/01/22 03:22 PM

Generation and Distribution System



Single Line Diagram
M/S Choithram Hospital, Indore
95 KW On-Grid Solar Rooftop System



Secretary
Choithram Hospital & Research Centre
INDORE



C.P. SOLAR ENERGY

BRANCH OFFICE : INDORE, UJJAIN, DEWAS, BHOPAL, SONKATCH, AGRA, DELHI, JAIPUR.
Tel : +91-7879701089, +91-9111419111, +91-911118586. Website : www.cpsolarenergy.in

2. WHEELING OF GRID

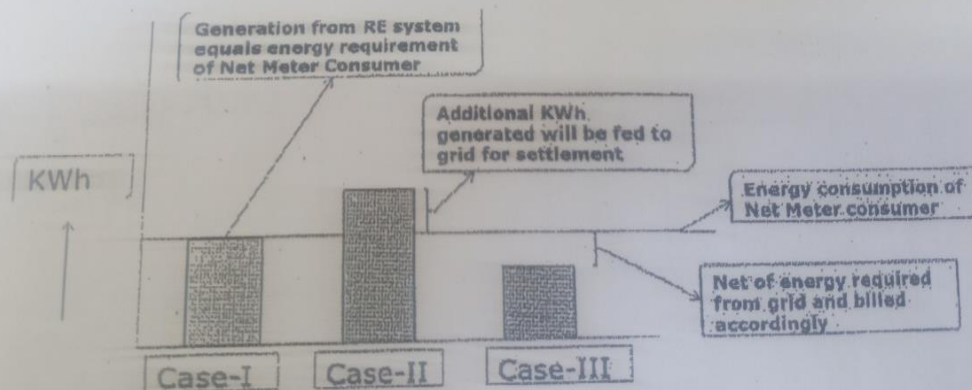
Net Metered RE System (Category-I)

Net Metered RE system: A grid connected RE system is installed in the premises to generate electricity. The power so generated is first consumed in the same premises and surplus power (if any) is fed to the grid of distribution licensee. In case, requirement of the premises is more than the renewable power being generated, the extra power is drawn from the grid.

5. POSSIBLE OPERATING MODES FOR ROOFTOP RE SYSTEMS

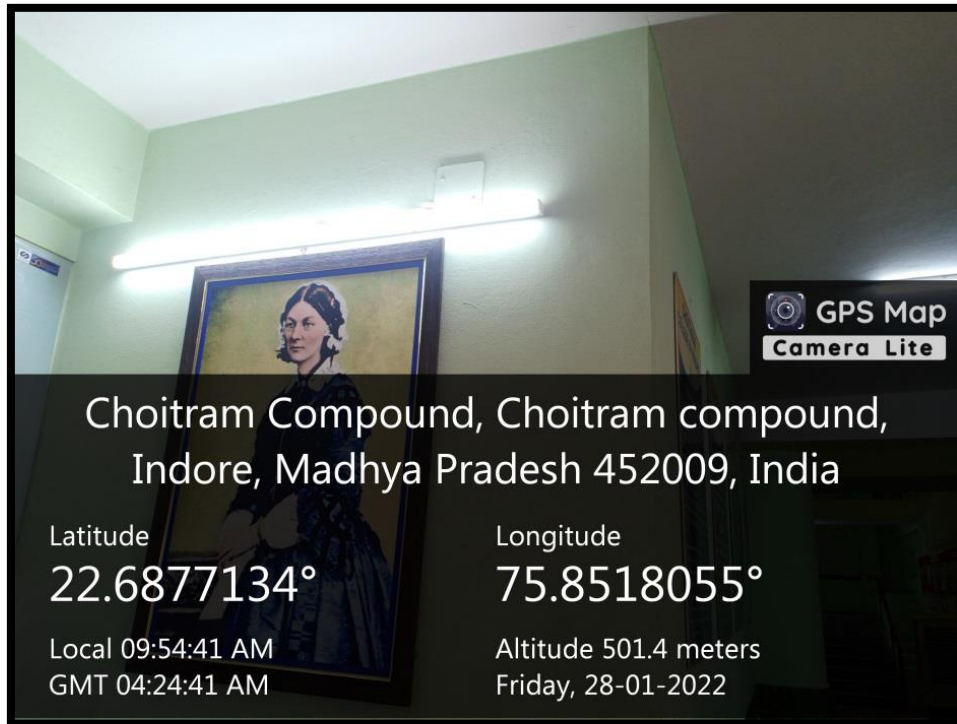
5.1. Net Metered RE Systems ("Category -I")

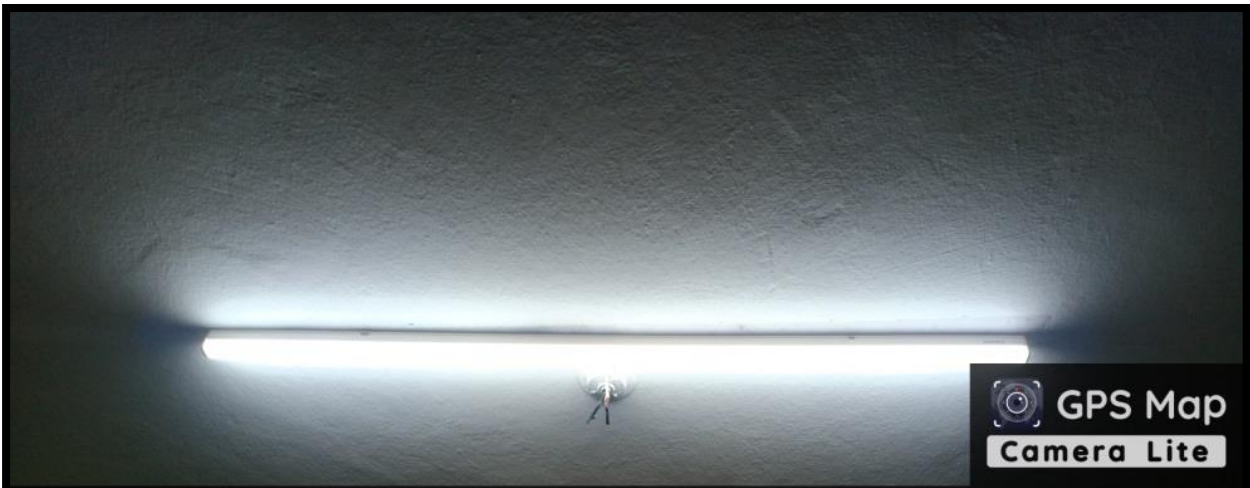
A Grid Connected RE System is installed in the 'Premises' as defined in para 2 (m) of this policy, to generate electricity. The power so generated is first consumed in the same Premises and the surplus power (if any) is fed to the grid of Distribution Licensee. In case, requirement of the Premises is more than the renewable power being generated, the extra power is drawn from the grid. There is energy accounting with the grid, which is explained below:-



3. USE OF LED BULBS/POWER EFFICIENT EQUIPMENTS

Institution has adopted energy efficient lighting including L.E.D. based, Bulbs and Tube lights etc. to promote energy efficiency.





Choitram Compound, Choitram compound,
Indore, Madhya Pradesh 452009, India

Latitude

22.6877134°

Longitude

75.8518055°

Local 09:54:52 AM

GMT 04:24:52 AM

Altitude 501.4 meters

Friday, 28-01-2022