



# CHOITHRAM COLLEGE OF NURSING



Accredited by NAAC, Affiliated to INC, MPNRC Bhopal, MPMSU Jabalpur  
Choithram Hospital & Research Centre Manik Bagh Road, Indore-452014(M.P.)

Email: [cconursing@yahoo.co.in](mailto:cconursing@yahoo.co.in), [choithramoffice@gmail.com](mailto:choithramoffice@gmail.com)

Website: [www.choithramnursing.com](http://www.choithramnursing.com)

## ENVIRONMENTAL SUSTAINABILITY AND CONCIOUSNESS

### ***Water Conservation Facilities***

As Choithram College of Nursing is located in campus of Choithram Hospital and Research Centre. The whole campus and college depends on ground water and Municipal Water supply system for all its water needs. Hence, efficient usage of available water and adaptation of water conservation measures are essential. The daily requirement of water in the campus is around 4.4500000 liters per day.

***The following measures are taken for the conservation of water:***

- 1. Bore well /Open well recharge**

→ The college campus depends on ground water for all its needs and the daily need of water in the campus is around 4.450000 lac liters/ Day (approx.). To compensate the mentioned daily need Choithram management had constructed 5 numbers of Bore wells (Near ETP Plant, Boys Hostel of Choithram International School, Near Auditorium in school premises, nursery and near to barricade ) with different depths as per the sub soil water position and two open wells (Near Doctor quarters and one in Boys hostel). As it is situated in urban area; campus has Municipal Water Supply System (Narmada Water line) also.



Unnamed Road, Krishi Mandi, Choitram compound, Indore, Madhya Pradesh 452009, India

Latitude 22.6850971°

Longitude 75.8503088°

Local 03:36:33 PM  
GMT 10:06:33 AM

Altitude 0 meters  
Thursday, 27-01-2022

### Open well recharge



Choitram Compound, Choitram compound, Indore, Madhya Pradesh 452009, India

Latitude 22.6873635°

Longitude 75.8521138°

Local 12:57:31 PM  
GMT 07:27:31 AM

Altitude 501.3 meters  
Wednesday, 19-01-2022

## 2. Waste Water Recycling

Waste Water is being treated through Effluent Treatment Plant (ETP). The Campus generates 3.5 lacs liters of liquid effluent per day. The ETP plant was commissioned and started functioning since 26<sup>th</sup> September 2001. The plant was designed to implement the following principle:

- Screening and removal of coarse splendid solid through bar screening.
- Floating and removal of free oil and grease by grease trap.
- Collection, equalization and simultaneous aeration in a tank.
- Flocculation, absorption. Oxidation and biodegradation by microbes in aeration tank.
- Separation of Biomass in clarifier tank followed by high-pressure filtration.
- Disinfection of the treated effluent with hypochlorite.
- Drying of separated sludge in sludge bed by solar heating.

The output of the ETP Plant is approximately 3 lac liters of water per day, which is used for gardening, and irrigation of the vast green belt spread over 36 acres. The treated water is also used for toilet blocks in part of the residential/ hospital area. Approximately 5000 kg sludge each month coming from the ETP is disinfected with hypochlorite dried by sunlight and used as manure.



Choitram Compound, Choitram  
compound, Indore, Madhya Pradesh  
452009, India

Latitude

22.6873745°

Longitude

75.8521075°

Local 02:28:16 PM

GMT 08:58:16 AM

Altitude 501.3 meters

Thursday, 27-01-2022



Choitram Compound, Choitram compound,  
Indore, Madhya Pradesh 452009, India

Latitude

22.6873745°

Longitude

75.8521075°

Local 02:29:02 PM

GMT 08:59:02 AM

Altitude 501.3 meters

Thursday, 27-01-2022

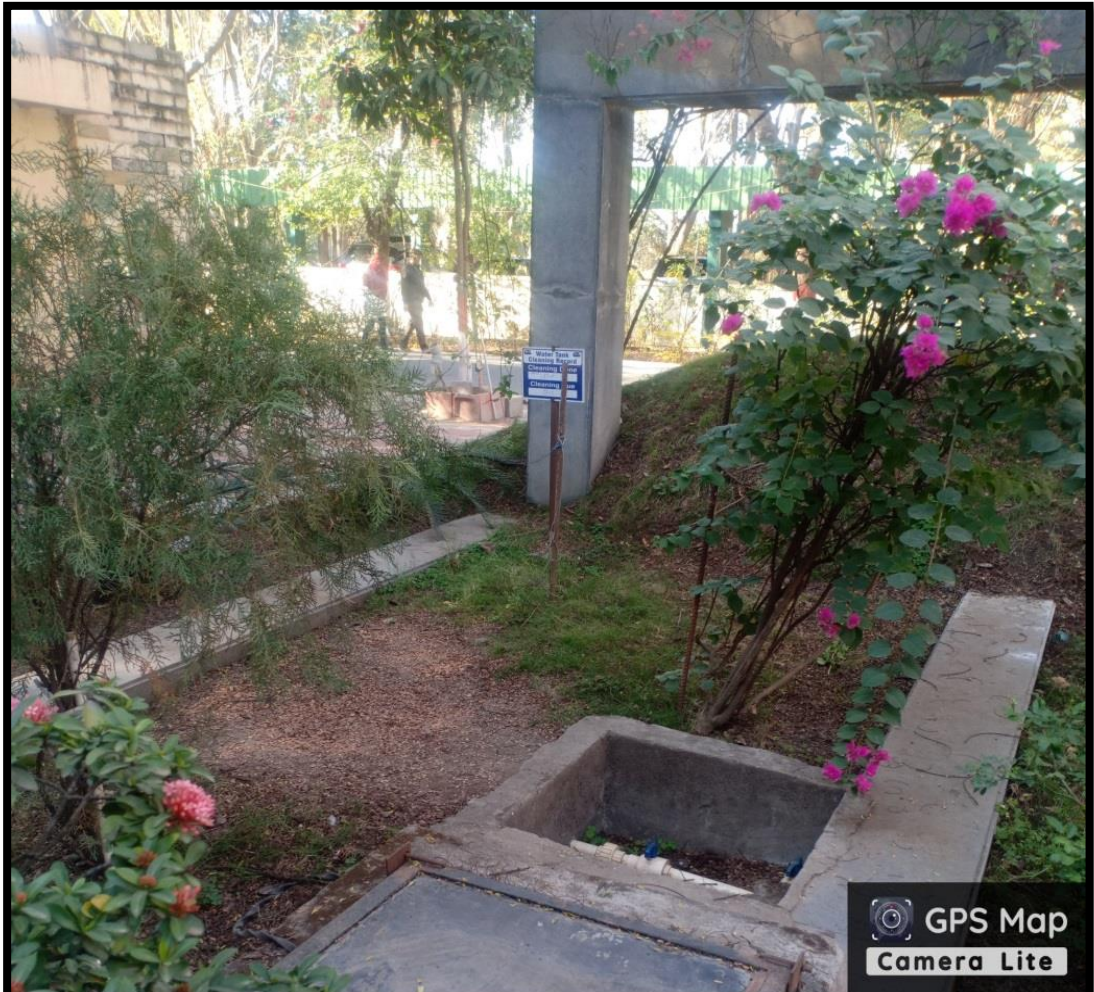
### 3. Maintenance of water bodies and distribution system in the campus

The ground water from different sources such as Bore wells and open wells is pumped into the underground storage tanks located at different places in the campus. There are two underground water storage tanks (One at Pump House, second one at Front of Cancer unit) and one overhead tank. From these two underground storage tanks water collected to overhead storage tank and distributed through well laid pipe network. Drinking water after treating in RO plant is supplied through a separate set of distribution pipes and water for all other purpose is supplied through another set of distribution pipe.

Entire distribution system is well supervised by a committee (Project office) to ensure that there are no leakages and wastages of precious water through joints, valves etc. All the stakeholders of the college are well educated to use water economically and efficiently.

#### Underground Water Storage Tank





GPS Map  
Camera Lite

Unnamed Road, Choitram compound,  
Indore, Madhya Pradesh 452009, India

Latitude

22.6881292°

Longitude

75.853276°

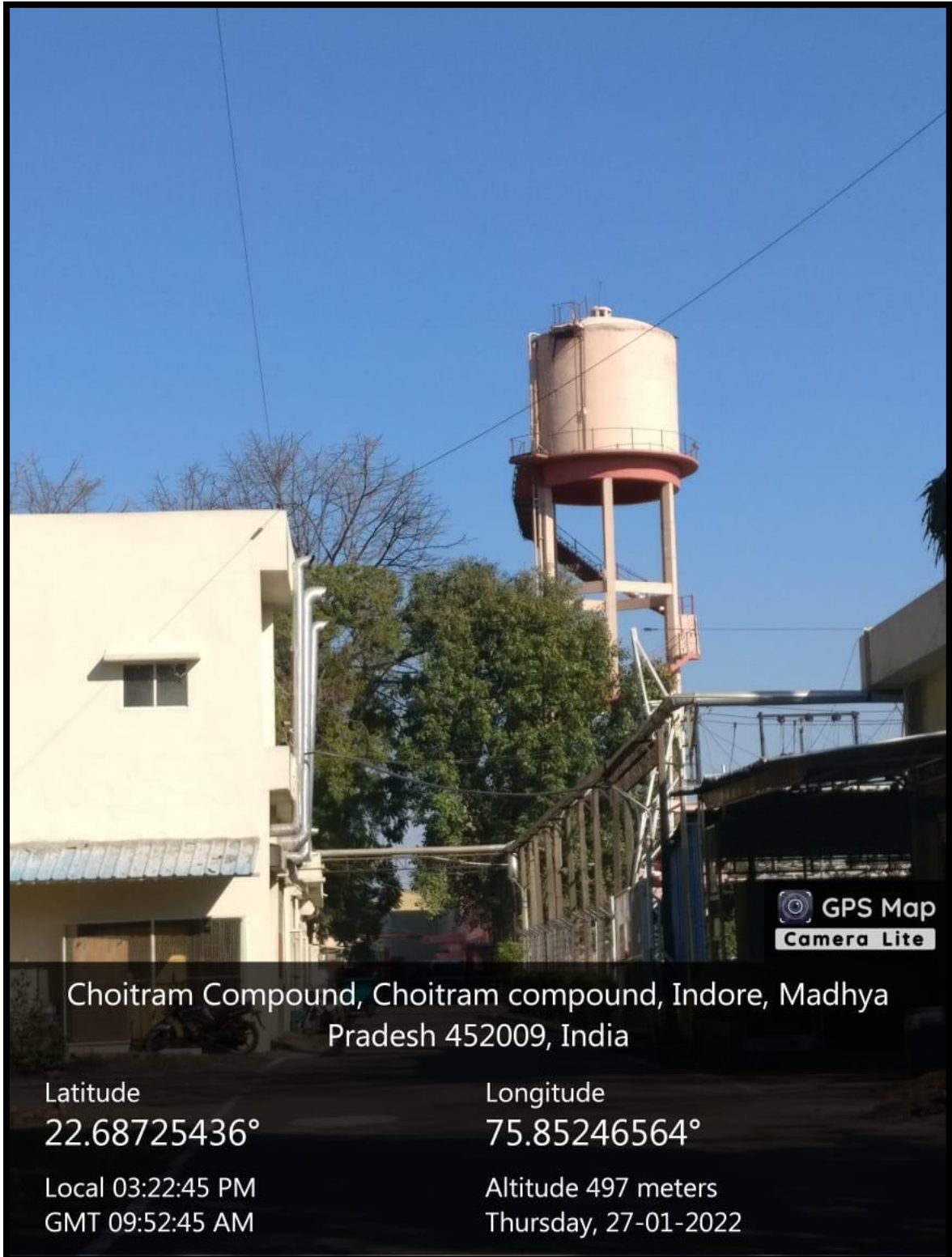
Local 03:26:19 PM

GMT 09:56:19 AM

Altitude 502.2 meters

Thursday, 27-01-2022

## Overhead Tank



 GPS Map  
Camera Lite

Choitram Compound, Choitram compound, Indore, Madhya Pradesh 452009, India

Latitude  
22.68725436°

Longitude  
75.85246564°

Local 03:22:45 PM  
GMT 09:52:45 AM

Altitude 497 meters  
Thursday, 27-01-2022